

Labomator 45

Roll Paper Processor



AGFA-GEVAERT



universal + reliable + economical +

The **Agfa Labomator 45** is the result of many years of experience in the design and manufacture of roll paper processors.

The combination of the production know-how of one of the largest manufacturers of lab equipment and specific knowledge of process technology have resulted in a machine unsurpassed for processing quality and processing reliability.

Many useful improvements have also been suggested by our customers. Alongside the worldwide Agfa service network, an exceptionally wide range of supporting documentation is available, in the form of pre-installation guides, operating instructions, servicing instructions with circuit diagrams, and spare parts lists with exploded drawings. All machines conform to German legislation on technical equipment (the Machine Safety Act) and have been tested by the Technical Inspection Society (TÜV) and Association of German Electrical Engineers (VDE).

Agfa Labomator 45
a worthwhile investment
for every lab!

Special features – in brief

Universal

- Machine versions with operating speeds of between 5 m and 17.50 m per strand and minute, outputs graded for any size of lab
- Four strand operation up to 12.7 cm paper breadth, alternatively two strands up to 12.7 cm plus one strand up to 30.5 cm paper breadth
- Optional darkroom or daylight operation with printer magazines

Reliable

- Strong, robust design, trouble-free continuous operation
- Excellent paper transport due to control system
- Top guide axles with ball bearings
- Precise chemical metering
- Accurate bath heating with electronic temperature regulators
- Electronically controlled, soft start machine drive
- Numerous monitoring functions

Economical

- In energy consumption
 - Heat exchanger systems for replenisher supply
 - Air-conditioned dryer
 - Automatic drive and dryer cut-out at end of paper
 - Minimum heat wastage
- In chemical consumption
 - High accuracy metering
 - Low solution carry-over due to efficient squeegees
- In water consumption
 - Multi-stage cascade washes
 - Water supply regulated by paper throughput
 - Pre-washing for efficient silver recovery

Easy maintenance

- Easy access to all essential parts, combined with compact layout
- Dryer access from both sides
- Easily replaceable squeegees
- Simple removal from frame

Easy to operate

- Clearly laid out central control panel with alarms
- At feed end leader belt elevator to enable paper clips to be attached and checked when belt static
- At output leading end of paper fastened to static take-up reel
- Improved working conditions due to daylight processing

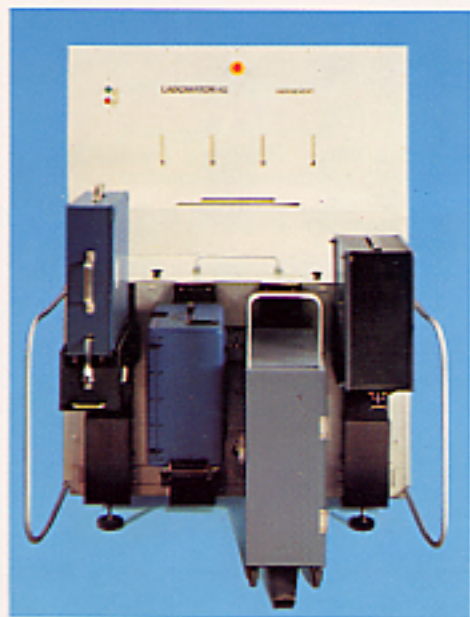
Advanced design

- Modular wet sections and dryers
- Capacity increases by extra modules
- Adaptable for process changeovers by use of standard single tanks
- Uniform design of all basic modules (drive, switch cabinet, take-up etc.) for all machine versions

Clean and quiet

- "Free" water supply
- Chemical and water outlets separate to conform to anti-pollution laws
- Extremely quiet machine operation

easy to maintain + easy to operate



Feed section

Daylight-universal feed section for all common printer magazines. Magazine adapter can be changed in seconds without tools. Accepts any mix of magazine types (world first!). Optional darkroom loading with roller blind and lock indicator. No light trap necessary.

Drive

Electronically controlled DC drive with slow acceleration. Torque, temperature and brush wear monitored.

Leader belt elevator

Standard equipment on all machines. Separate drive with slow acceleration and deceleration to avoid damage to paper. Clips can be checked when belt is static.

Metering scanners

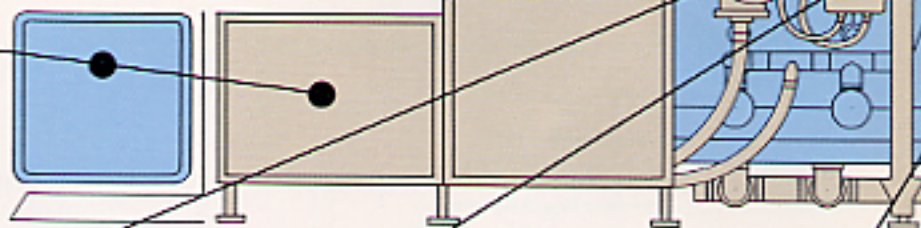
Paper breadth and length IR scanned to accurately meter chemicals and wash water. Replenisher and wash water supply through precision flowmeters.

Paper transport

Regulated paper transport system for trouble-free and gentle paper transport. Exceptionally good alignment. End of paper does not skew due to trailing end guides in wet section and dryer.

Chemical filters

Efficient pressure filters with contamination indicators.



Circulation system

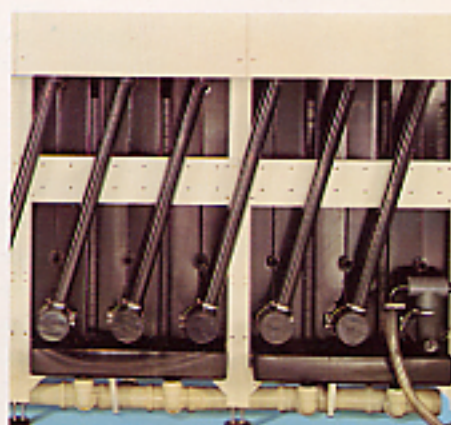
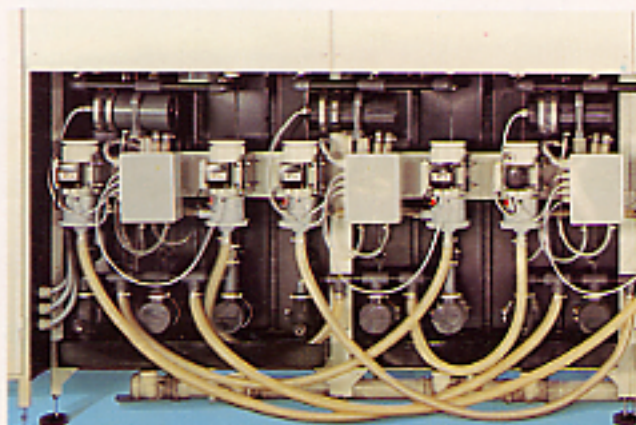
Powerful magnetic pumps for thorough chemical mixing and uniform tank temperature. Monitored pump operation.

Heating system

Heat exchangers for fast first heating, and for regulated heating to maintain the tightest temperature tolerances. Electronic temperature regulators. Overheating cut-outs.

Cascade washes

All washes are cascades for water economy. Pre-wash - fed from main cascade - for efficient silver recovery from wash water with the Agfa AgR. Cascade function monitored.



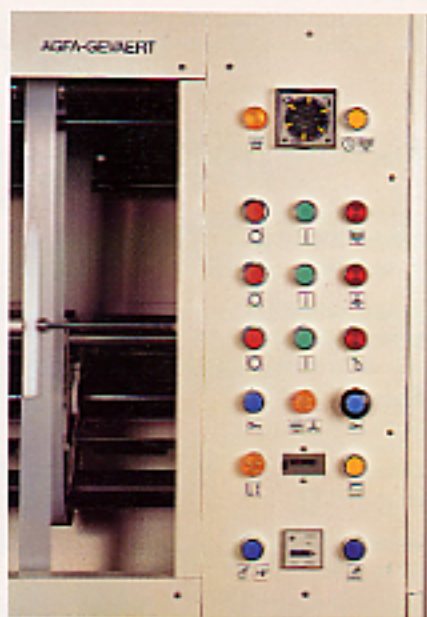
advanced design + clean and quiet

Squeegees

Easy replacement. Long life as all four edges are useable. Low chemical carry-over. Increased silver recovery rate.

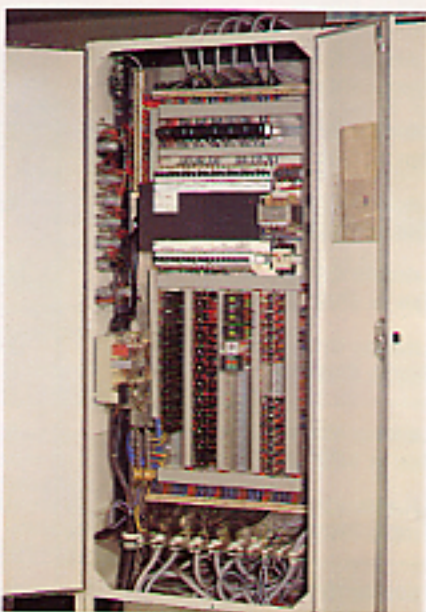
Operator's panel

Neat, compact layout with alarms.



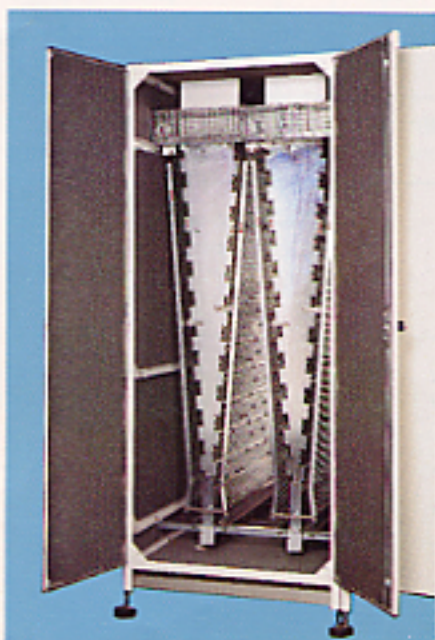
Switch cabinet

Compact. One design for all versions.



Convenient take-up

Separate drive with electronic controls for each of the four take-up reels. Empty reels remain static to reduce noise. Constant paper tension independent of roll diameter. Leading paper end attached when reel static. Wide paper strands wind perfectly due to loop-regulated interval take-up system.



Dryer

Dryer modules with doors on both sides for easy access. Dryer driven by main drive, no synchronization problems. Controlled paper movement in the dryer. Air-conditioning to save energy. Good insulation. Constant drying level independent of ambient conditions.

Specification

Machine Types		Dimensions in m			Electrical specification			Weights in kg**		Water consumption
		Length*	Breadth	Height	Connected load kVA	max. power take-off (A) 380/220 V	Average consumption kWh/h	Empty	Full	at full capacity l/min.
Labomator 45/500-P 85 Type no. 8790/102	Process: AP 85 Type 4 paper	5.27	1.40	2.10	25	65/90	12	1.933	3.533	19.5
Labomator 45/1000-P 85 Type no. 8790/112		8.17	1.40	2.10	49	85/140	20	3.033	6.333	39
Labomator 45/500-C (BX) Type no. 8790/102	Process: AP 87, AP 92 (BX), Ekstraprint 2	5.47	1.40	2.10	29	65/100	11	2.013	3.813	18
Labomator 45/750-C (BX) Type no. 8790/112		7.07	1.40	2.10	36	74/120	15	2.613	3.313	27
Labomator 45/1000-C (BX) Type no. 8790/122		8.67	1.40	2.10	45	85/135	18	3.213	6.813	36
Labomator 45/1250-C (BX) Type no. 8790/132		9.97	1.40	2.10	56	95/160	23	3.723	8.043	46
Labomator 45/1500-C (BX) Type no. 8790/142		11.27	1.40	2.10	62	105/175	25	4.233	9.273	55
Labomator 45/1750-C (BX) Type no. 8790/152		12.67	1.40	2.10	73	125/220	30	4.743	10.503	64
Labomator 45/500-C (BL FX) Type no. 8793/102	Process: AP 92 (BL, FX), MCC 100	6.17	1.40	2.10	29	65/100	11	2.263	4.603	29
Labomator 45/750-C (BL FX) Type no. 8793/112		7.77	1.40	2.10	36	74/120	15	2.863	6.103	44
Labomator 45/1000-C (BL FX) Type no. 8793/122		9.27	1.40	2.10	45	85/135	23	3.463	7.603	59
Labomator 45/1250-C (BL FX) Type no. 8793/132		10.67	1.40	2.10	60	100/165	24	3.973	8.833	74
Labomator 45/1500-C (BL FX) Type no. 8793/142		12.17	1.40	2.10	66	110/180	27	4.573	10.333	88
Labomator 45/600-R Type no. 8792/102	Process: AP 81/R 14	6.17	1.40	2.10	35	65/105	15	2.283	4.633	27
Labomator 45/600-R Type no. 8792/112		6.67	1.40	2.10	35	65/105	15	2.433	5.133	36
Labomator 45/690-BW Type no. 8792/302	Process: BW	5.47	1.40	2.10	25	65/90	12	1.683	2.783	27

* The lengths given refer to machines without feed sections. Machines are lengthened:

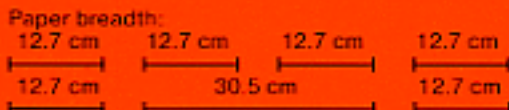
with darkroom feed section	type 8794/100 by 53 cm
with daylight feed section	type 8780/100 by 100 cm
with daylight-universal feed section by 100 cm plus magazine length of 65 cm	type 8768/100 by 165 cm

** The weights given are likewise without feed section. They are increased:

with darkroom feed section	type 8794/100 by 67 kg
with daylight feed section	type 8780/100 by 80 kg
with daylight-universal feed section	type 8768/100 by 318 kg

Machine Types and Accessories

Order no. Labomator 45
Colour, and black and white roll paper processor on leader belt principle, option of darkroom, daylight, or daylight-universal feed sections. The daylight version is non-standard and must be specified when ordering.



Power supply
3 x 220 V
3 x 380/220 V 50 c/s
3 x 415/240 V 50 c/s
60 c/s on request
Please specify the voltage needed in your order.

For Process AP 85

8790/102 Labomator 45/ 500-P 85
8790/112 Labomator 45/1000-P 85

For Processes AP 87, AP 92 (BX) and Ektaprint 2

8791/102 Labomator 45/ 500-C (BX)
8791/112 Labomator 45/ 750-C (BX)
8791/122 Labomator 45/1000-C (BX)
8791/132 Labomator 45/1250-C (BX)
8791/142 Labomator 45/1500-C (BX)
8791/152 Labomator 45/1750-C (BX)

For Processes AP 92 (BI, FX) and HCC 101

8793/102 Labomator 45/ 500-C (BI, FX)
8793/112 Labomator 45/ 750-C (BI, FX)
8793/122 Labomator 45/1000-C (BI, FX)
8793/132 Labomator 45/1250-C (BI, FX)
8793/142 Labomator 45/1500-C (BI, FX)

For Processes AP 61 and Ektaprint R 14

8792/102 Labomator 45/460-R
8792/112 Labomator 45/610-R

For black and white

8792/302 Labomator 45/690-BW

Darkroom Feed Section

8780/100 **Daylight Feed Section**
For machine speeds up to 12.50 m/min. Suitable for direct loading of all magazines in the Colomator 7560 range. With adapters, Variograd and Colomator N 2BS/ N 3BS/N 4B magazines can be used.

Daylight-Universal Feed Section

8768/100 For Variograd, Colomator, including Colomator 12, and various other magazine makes.

Order no. Accessories for Daylight Feed Section Type 8780/100

8780/300 Adapter for 2-B daylight magazine, type 7360/000
8780/310 Adapter for 3-B daylight magazine, type 7418/580
8780/320 Adapter for 4-B daylight magazine, type 7505/000
8780/340 12" 100 m working magazine for paper breadths 17.8-30.5 cm
8780/330 Adapter for 12" 100 m working magazine, type 8780/340
8826/155 3-B working magazine for 7.6, 8.9 and 10.2 cm wide roll paper, 300 m (no adapter necessary)
8780/350 Adapter for Germann & Gsell 4" printer magazine
8780/360 Adapter for Germann & Gsell 5" printer magazine

Accessories for Daylight-Universal Feed Section, Type 8768/100

8768/340 Agfa 100 adapter for Colomator N 2BS/N 3BS/N 4B magazines
8768/330 Agfa 300 adapter for magazines in the 7560 range
8768/350 Agfa C 12 adapter for magazine type 7517/550 for Colomator 12
8768/360 Gretag 100 adapter for printers 3114-3117
8768/300 Gretag 500 adapter for printer 3140
8768/320 Kodak adapter for printer 2610
8768/310 Pako adapter for Mach printer

General accessories for Labomators 45

8864/200 200 litre replenisher tank with base
8864/300 300 litre replenisher tank with base
8864/400 Food pump, only one pump per replenisher tank necessary if the tank is on the same level or is not at least 2.20 m above the processor
8794/120 Paper clip for all sizes
8006/100 150 m reel flange, two flanges make one feed or take-up spool
8826/140 300 m reel flange, two flanges make one feed or take-up spool
8826/145 300 m paper reel for 8.9 cm paper (3.5")
88826.2140 Carrying handle for 300 m reel
78807.6304.0 Replacement filter cartridge for circulation pump throwaway type
8820/380 Tank connection for 2 Labomators 45 one required for each tank connected
8820/385 Tank connection for 3 Labomators 45
71-1340 Splicer for leader belt
83901 Leader belt lacing
8801/130 Squeegee rollers (set) for dryer entry on Labomator 45, needed for Gretag punch marker; if subsequently ordered, excluding installation.

We reserve the right to change designs, designations, or descriptions of the scope of delivery.

That's Agfa-Gevaert

A European concern. Originated in 1964 from a linkup between Agfa AG Leverkusen and the Belgian firm Gevaert Photo-Produkten NV Mortsel (Antwerp). Three main factories at Leverkusen, Munich and Mortsel/Belgium. A total of 23 production centres in Belgium, Germany, France, Portugal, Spain, Argentina, India and the U.S.A. Agfa-Gevaert products are marketed in 145 countries.

Activities

Amateur- and professional photography: Amateur cameras, flash units, projectors, films, papers, chemicals, laboratory and photo-finishing equipment.

Technical photography: Medical radiography, graphic arts, industrial reprography, document-copying photography, motion picture and television films, office-copying and microfilm systems, COM.

Magnetic tapes: Magnetic tapes for audio and video, compact cassettes, video cassettes.

AGFA-GEVAERT AG · POSTFACH · D 5090 LEVERKUSEN 1

